

# Master Builders donate a new future to the kids

Nestled in Renton is a kid-friendly complex splashed with color, humor and love.

Now that you're feeling warm and cuddly, here's the punch line: The complex stands as a monument to enlightened self-interest.

The Vision House Children's Village day-care center was built entirely through donations from private builders, artists and others. Even the grant money came from non-governmental sources.

Total tab: \$1.2 million.

Donations flowed, not only because the project was the right thing to do, but because many donors perceived such generosity as an investment that would pay dividends for their community.

Self-interest.

"I think the Master Builders understand that if we can help families at risk from falling into a cycle of poverty and homelessness, the families can re-enter society and give back to the community," says Susan Camerer, executive director of Vision House.

Vision House began in 1989 when Susan and her husband John watched a television movie called *God Bless the Children* about the whirlpool of poverty that too often swallows families and destroys them.

"Being people of faith, we felt that we had found our calling."

Vision House began as an backstop for families stumbling toward homelessness. They had a place to stay, to collect themselves, and then to move on – and up.

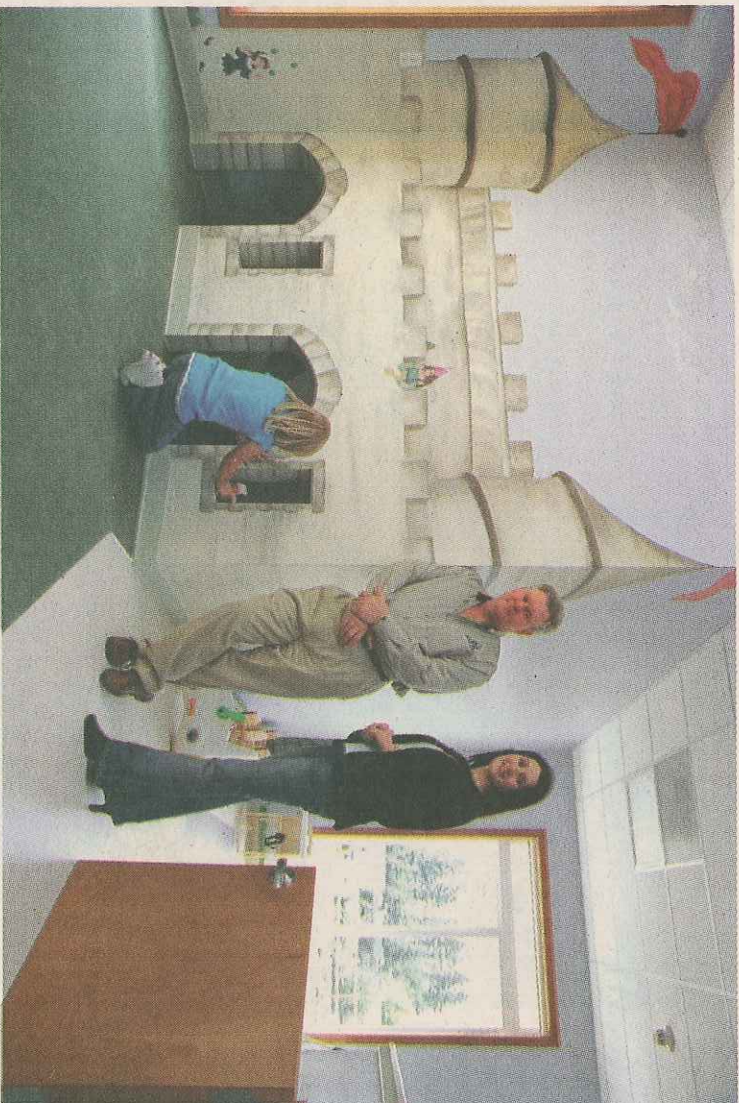
"In about 1999 we understood that you can't address homeless families without dealing with child care."

The new Children's Village became first a dream and then came to life, a safe place where moms (mostly) could leave their kids while working.

Susan Camerer turned to the Master Builders Association of King and Snohomish Counties to do much of the heavy lifting. The association is based in Bellevue.

"We got involved for a variety of reasons, one being that Vision House has a model for transitional housing that doesn't rely on government money," said Steven Jewett, project manager for the builders. "Projects like these allow our builders to contribute directly to the communities they live in."

About 200 builder firms got involved, donating expertise, labor and materials – representing about half of the total value



**MAKING A DIFFERENCE:** Steven Jewett of the Master Builders of King and Snohomish Counties and muralist Mozelle Spencer linger in one of the rooms built and decorated for free at Vision House. Day care in such facilities is vital for the health of financially bruised families. (Eliza Truitt photo)

## Artists' touch makes classroom homelike

Muralists involved in the Vision House project are not the stereotypical smocked *artexes* of volatile temperament and untouchable taste. Rather, they generally make a living translating the wishes of private individuals into home or business murals.

"We don't paint our own drum," says Mozelle Spencer, artistic director for the Vision House mural project.

Muralists involved in the project are licensed, bonded and insured.

"We enter homes and businesses to work with people to find an ambiance that suits their needs," Mozelle says.

For more information concerning home or business murals, call Mozelle Spencer at 206-755-7721.

of the Children's Village day-care center, which opened this summer. Four units were built, with seven more envisioned in the future as the second phase of the project.

Several materials suppliers got involved, not only because the cause was good, but because being associated with the builders themselves helped bond business relationships beyond philanthropy.

Also, achievements such as the day-care center help brighten the public perception of the building industry, says Susan Camerer. Tax considerations were small.

Foundations, walls, plumbing and lights make a building, but they don't make a home for kids. For that, you need something other than vanilla boxes. So Susan Camerer turned to a group of artists who, like the builders, donated their expertise and time.

Mozelle Spencer, a muralist from Mercer Island, was selected as artistic

director of the project. Her job: To transform plain walls into a playground of art. She organized 30 Seattle artists and donors, who dug in with equal measures of persistence and passion.

For three weeks straight they painted castles and fairytales, hidden passage ways to playful nooks, jungles filled with trees,

## Dozens of companies made project possible

<p>Conner Homes Woodrville Lumber B &amp; H Drywall Pacific Heating Steve Jewett Lori Sandler Jim Branshaw Autumn Donovan Mozelle Spencer Ketchikan Drywall Triumph Technologies Riverside Interiors Cedar King &amp; James Hardie Superfloors Tiz's Door Sales Contemporary Countertops Fineline Pacific Mildred Manufacturing Holliday Masonry &amp; Mutual Materials Summit Drywall King Bros. Paul Ollestad Cramer Design Steven Elkins Architecture Ellie Baker Leonardi Landscaping Tamara Taylor Jordan Swain</p>	<p>Brian Major Jennifer Carrasco Doma and Rod Heming Joey Anderson Cady Schmitt Marty Bennett Nancy Bosjancic Northeast Carpet Sales Custom &amp; Finish Carpentry REC PCS Millwork Electric Electric Hansen's Valley Supply Foundation Specialists Finishing Touch LaFord Framing Inc. GE Moien Superior Structures Gasline Mechanical Kitchencraft Cabinets One-Way Plumbing Celina Painting Canyon Creek Cabinets Bulgers King Concrete Tennilzen, CHC, Custom Washington Insulation</p>	<p>Seattle Lighting JJ Plumbing Construction Unlimited Caidman Reid Pacific D R Strong Fairway Ornamental Iron Maytag Hollabaugh Bros Rodda Paint Tactile Signs Kitchen Craft Waste Management Pacific Window Covering Williams Scotsman Glacier NW Bunker Electric Quality Sales Inc (Grohe) Collins Concrete Delta Legacy Roofing Patterson Roofing Reliable Concrete Pumping RG Trucking ProTeam Handcraft Reflection Industries Dana Waterproofing PSI</p>	<p>Utility Vault Co. Kohler Norm Cook Trucking James Gypsum Flooring Miles Kartak PABCO Counter-Tech Stone-Drew/Ashe &amp; Jones Metal Masters CAD of Puget Sound East Finishings Courtesy— Ford Graphics Pacific Star Gutters Manor Hardware Terra Associates Whirlpool NW Cascade Buckets Shane Construction Emerald City Fence Halife WH Cress Cascade Window Products Arnold's Appliances</p>
--	---	--	---

floating butterflies and smiling animals, blue water rich with sea life, jumping whales and schools of fish, a barnyard with life-size farm animals, sleepy bears at nap time resting on soft clouds, dreaming in a lullaby land.

"These kids are worried about food and a roof over their heads; they need something more than white, sterile walls," says Mozelle. "We wanted every child who came through the door to feel happy and calm, to be inspired by their own visual imagination," says Mozelle.

"We started as early as 6:30 and sometimes ended at 3 – that's 3 in the a.m.," she said.

Such unconventional hours were necessary for small, generally one-person companies trying to mix philanthropy with the more mundane aspects of business life, like taking home enough money to buy the groceries.

Some construction outfits are so big they have bookkeepers for their bookkeepers. But many artists have a single checkbook, too often teetering toward the red side of the ledger. A commitment to volunteer had to fit in the hours not committed to making a living.

Autumn Donovan was the overall interior designer who set the tone for the project. Each room had a captain and a muralist to ensure the work went smoothly and held to the overall themes. Team members complemented Donovan's ideas with designs of their own. Total value of the artistic donations was about \$80,000.

Artist Jennifer Carrasco was one of the artists involved, and she's hooked: "We all came for the ribbon-cutting – so many people who put in free time or materials. The list went on and on. Many were these rough and tough construction guys. I was touched."

We  
salute...



...the Master Builders, the muralists, and Vision House for making our community a better place to live -- and to raise our children

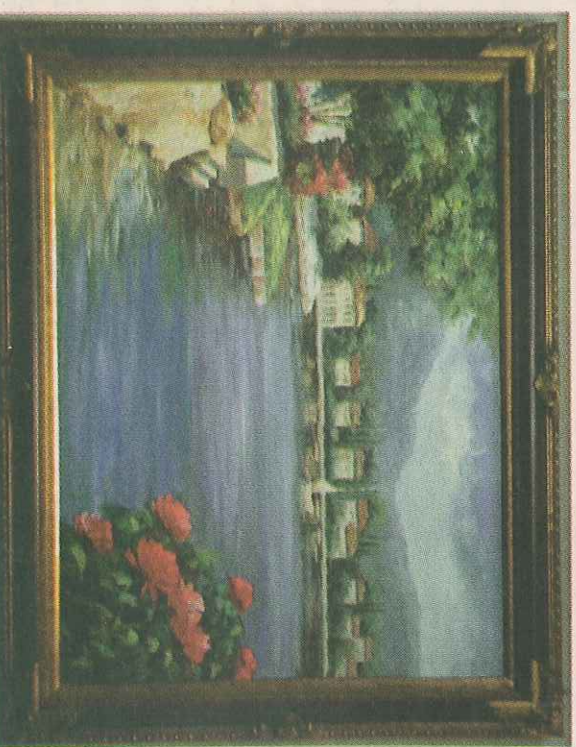
Conner Homes  
Bennett Homes, Inc.  
Sunset Materials  
Case Handyman & Remodel: Eastside

AAA Kartak Glass & Closet  
LakePointe Design & Remodel  
Eastside Business Post  
D.R. Jones Consulting Engineer

Art +

Fine original works from around the nation -- and beyond. Custom framing, Paintings, Mixed media, Prints, Gifts. Bring this ad and save 20 percent.

Oil on canvas 48"X35"



15 Lake Street Kirkland, Wash. 98033 425-828-0757



HERALD THURSDAY, SEPTEMBER 13, 2007

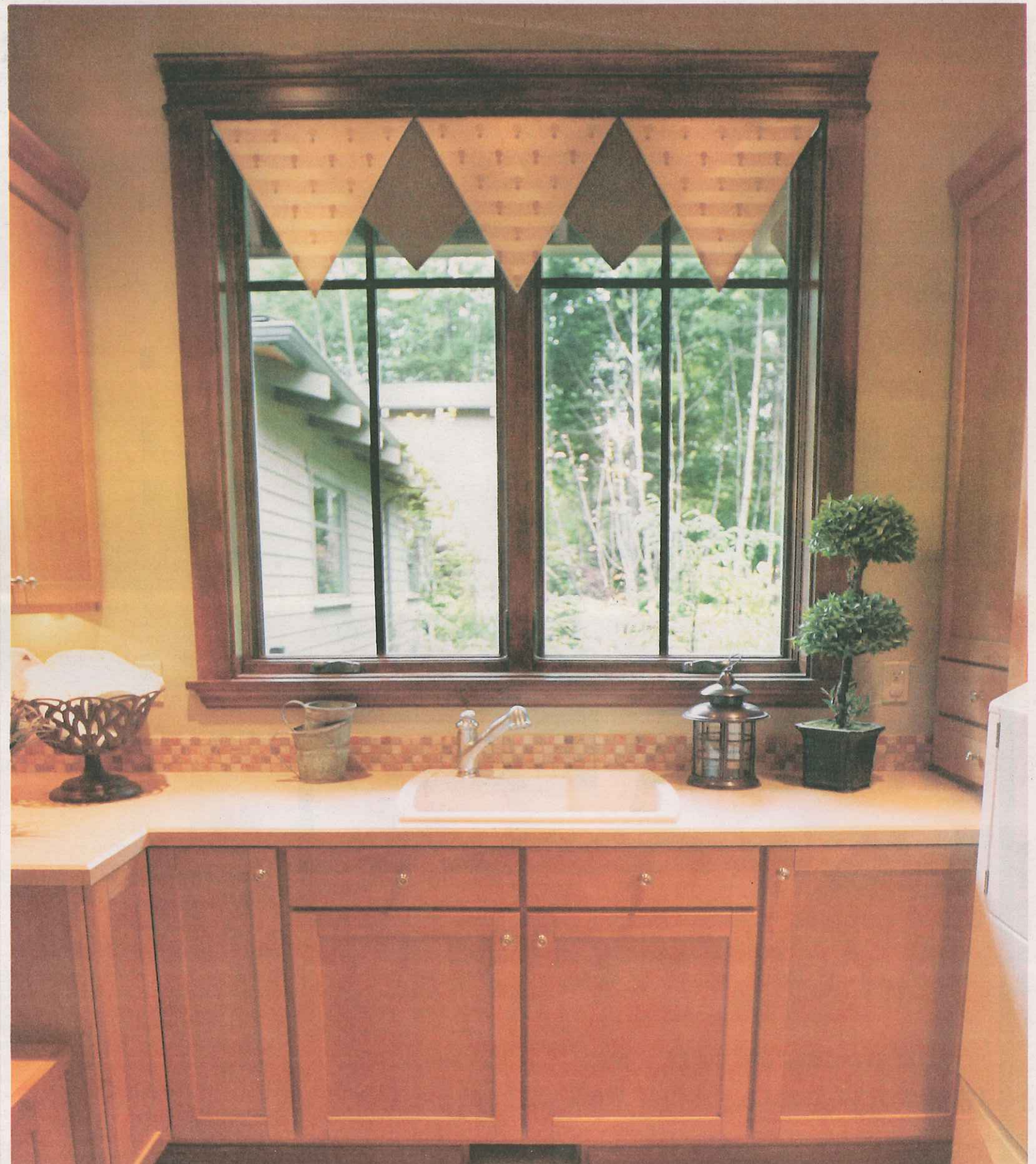
# Home & Garden

**COVER STORY:**

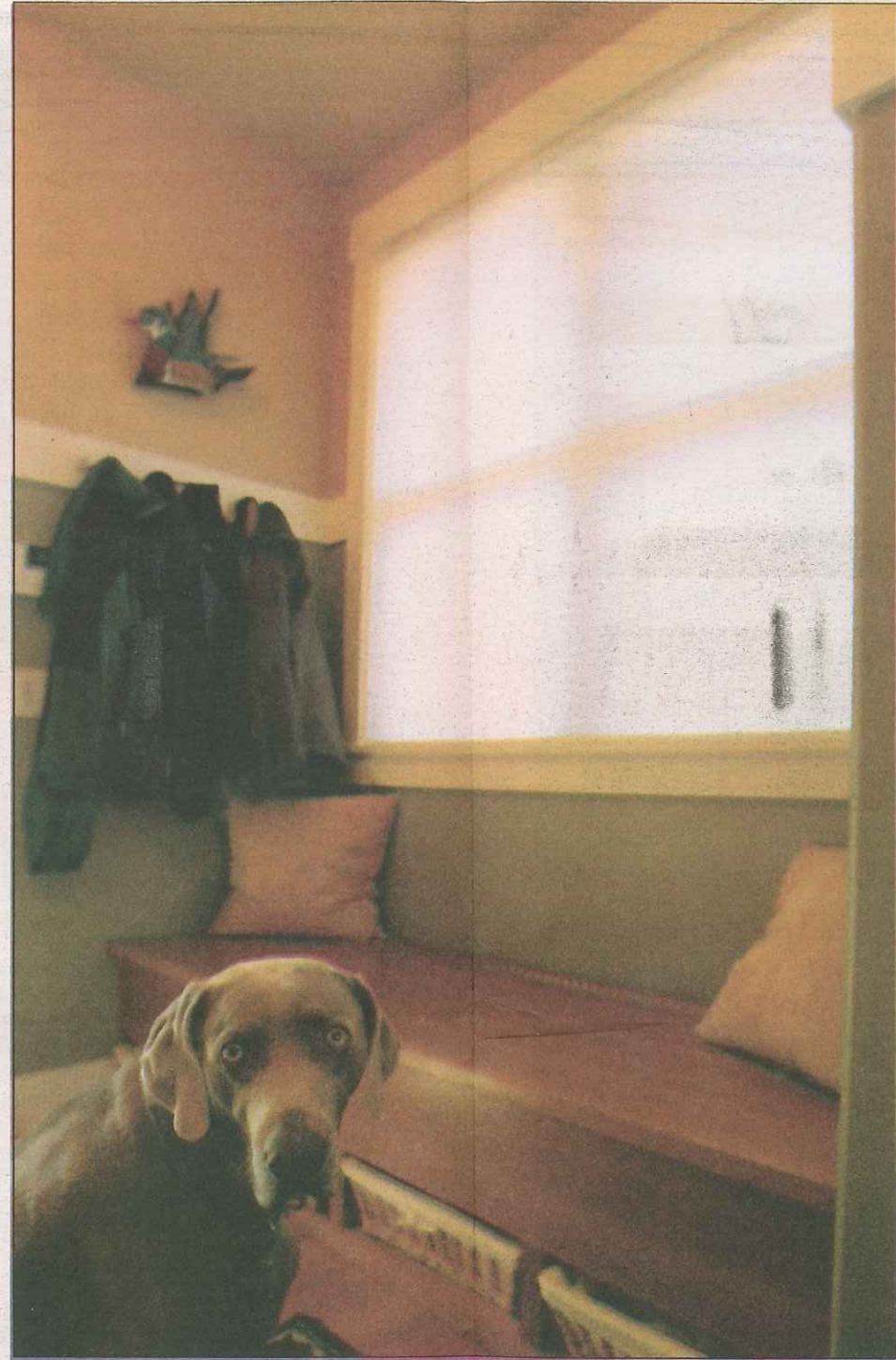
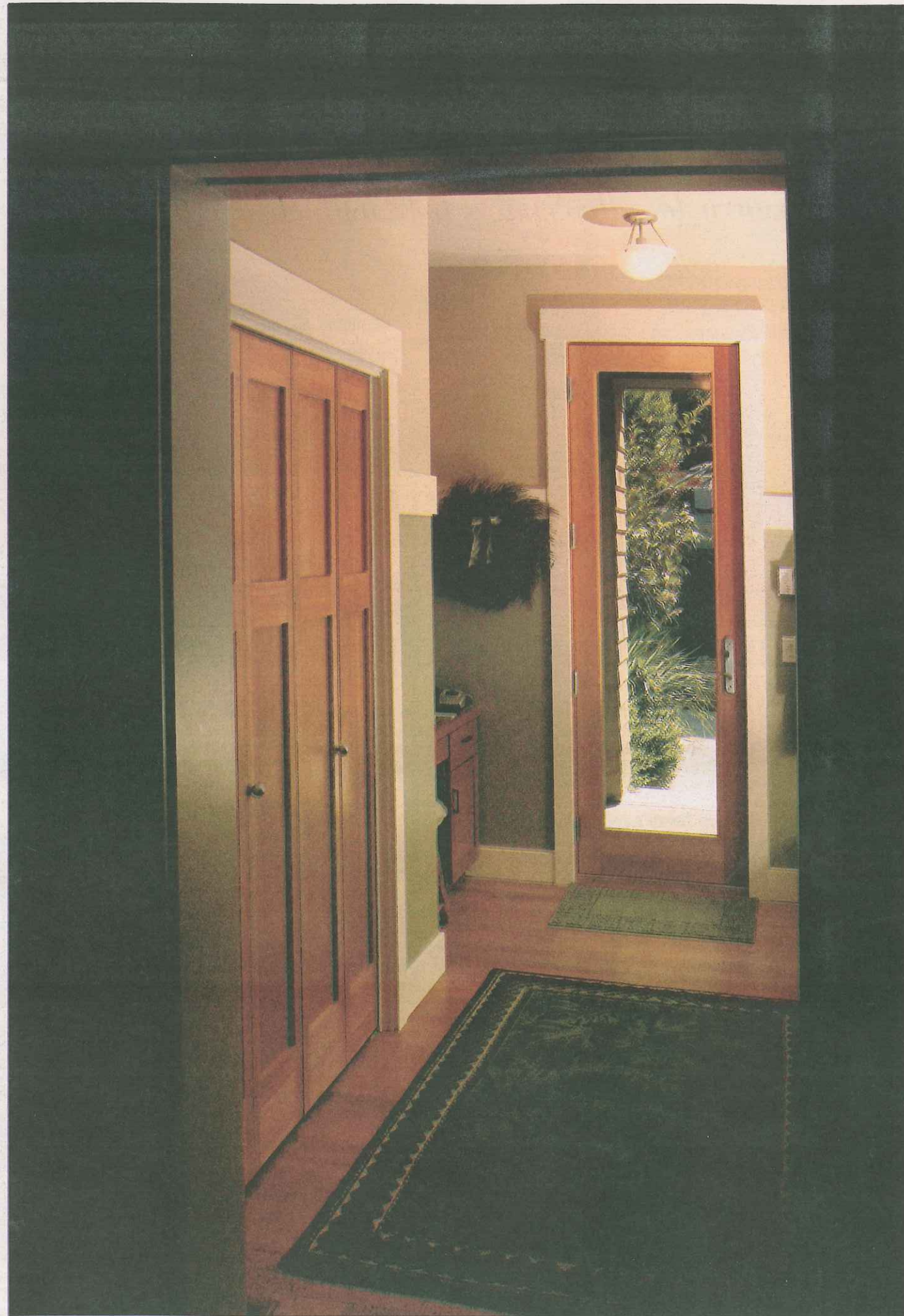
Lowly  
mudroom  
is moving  
on up,  
Page 8

Snohomish  
Historic  
Home Tour  
on Sunday  
Page 3

Seal your  
little  
meals  
with ease,  
Page 6







# MUDROOM

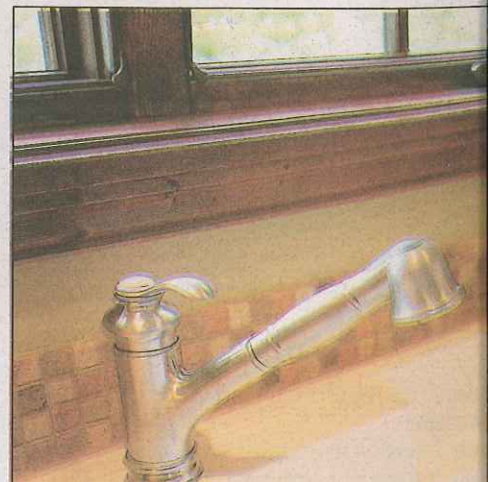
Sparkling entry, laundry

By SARAH JACKSON  
Herald Writer

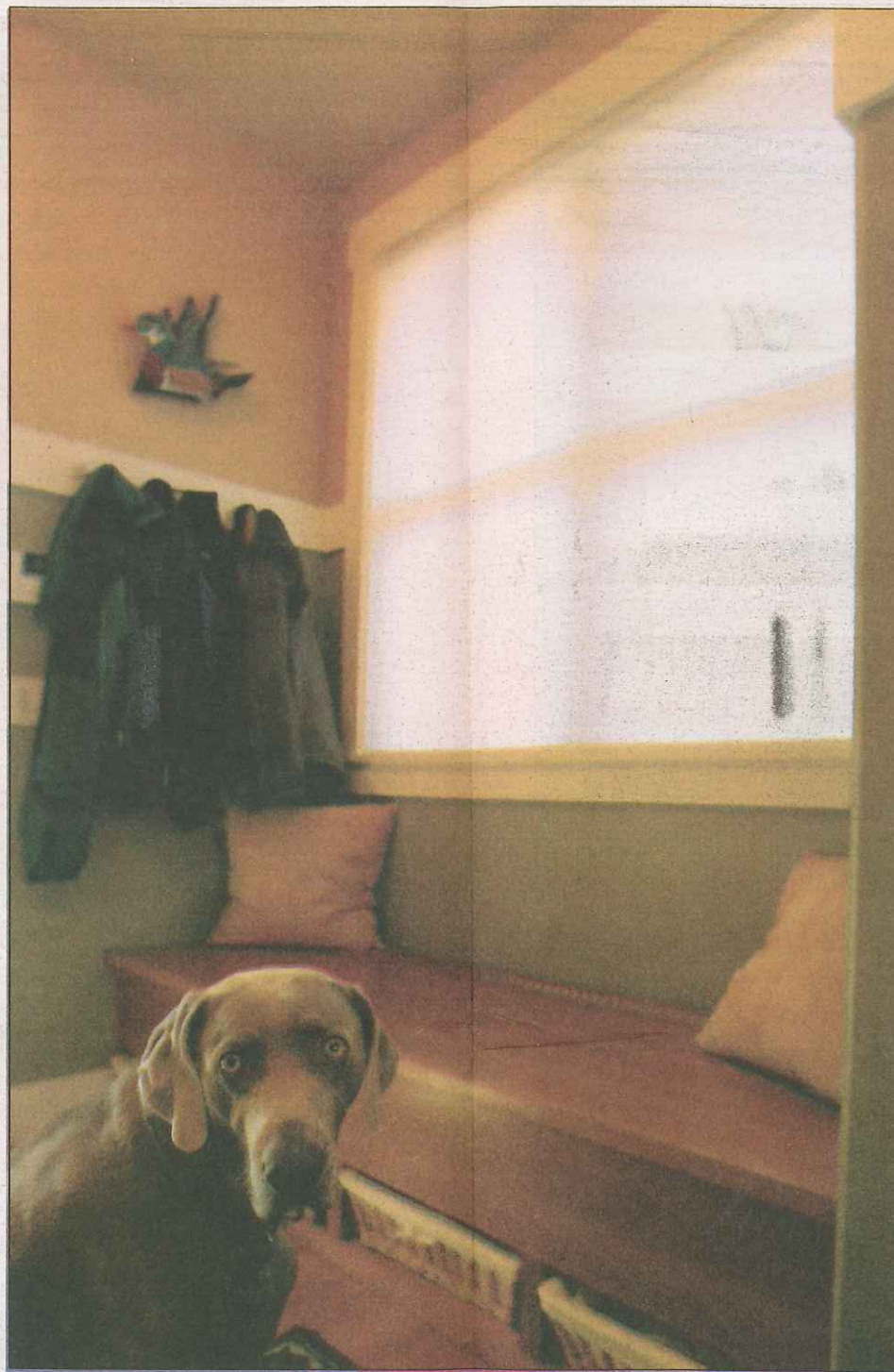
**W**hen Nancy and Bob Uhlmansiek had to leave their Camano Island home for dinner, they greet their guests at their elegant front door. But when it comes to day-to-day life, the mudroom, accessible through a separate entrance, is all the action.

Once inside the small glass side door, they can see the waters of Saratoga Passage thanks to a view straight through their kitchen.

To the left, a built-in bench made of cherry







# MUDROOM MANIA

*Sparkling entry, laundry spaces help with clutter, flow*

By SARAH JACKSON  
Herald Writer

**W**hen Nancy and Bob Uhlmansiek have friends over to their Camano Island home for dinner, they always greet their guests at their elegant front entrance.

But when it comes to day-to-day living, it's their mudroom, accessible through a separate entrance, that gets all the action.

Once inside the small glass side door, they can sigh and spy the waters of Saratoga Passage thanks to a view that stretches straight through their kitchen.

To the left, a built-in bench made of cherry wood invites

under a large window. Pillows, storage baskets, coat hooks and a rug warm up the space.

At right, a small built-in desk area provides a quaint venue for checking schedules, opening mail and answering calls.

"It is the departure point and the entry point, too," said Nancy Uhlmansiek. "I just didn't want to be coming in the front door, the formal door, with the dog after his walks, and from the grocery store and that kind of thing."

Indeed, mudrooms — despite their primitive-sounding moniker — make perfect sense in the wet Northwest, where we definitely need dreamy transitional spaces to stow damp rain jackets, drippy umbrellas and muddy shoes.

See MUDROOM, Page 10



**TOP LEFT:** Abundant natural light, task lighting and a Neptune washer and dry combo by Maytag in the Street of Dreams Copper Falls mudroom make the prospect of doing laundry seem almost appealing.

**BOTTOM LEFT:** Miniature tiles on the backsplash and a deep utility sink create an inviting work space in the mudroom at the Copper Falls home.

HERALD PHOTOS BY  
JENNIFER BUCHANAN





KIRKLAND PERFORMANCE CENTER HOLDS A GOLF TOURNAMENT AND FAREWELL FUNDRAISER p6

# eastside life

THE SOURCE FOR NEWS ON THE EASTSIDE

WWW.THEEASTSIDELIFE.COM

SEPTEMBER 2008 #5



## Zero Energy House project takes off on the Eastside <sup>p2</sup>

### GOOD CAUSE

Washington Wines Festival Benefit Weekend Raises More Than \$1.4 Million to Benefit Camp Korey <sup>p5</sup>

### food & wine

James Cluer offers wine & spirit education classes at Yarrow Bay Grill <sup>p4</sup>

### social buzz

Eastside GreenDrinks a hit at the new ecohaus in Bellevue <sup>p7</sup>

### real estate

Read the truth about the mortgage market <sup>p8</sup>

The Shirey Contracting of Issaquah team breaks ground for the Cutting-edge Demonstration home. Top L to R: Sarah Blanchard, Riley Shirey, Donna Shirey, Pam Worner, Autumn Donovan. Bottom, L to R: David Clinkston and David Hilgers.

PLEASE RECYCLE - READ AND PASS ALONG TO A FRIEND





## the greenscene

# BOTHELL COMPANY ANNOUNCES INNOVATIVE NEW PRODUCTS AND SOLUTIONS FOR TREATING STORM WATER RUNOFF

Construction contractors and managers of industrial sites finally have an affordable and completely environmentally responsible resource to meet today's stringent discharge standards thanks to ChitoVanLC, an innovative product recently launched nationally by Cascade EcoSolutions. The announcement came at StormCon, the World's Largest Surface Water Quality Conference and Exposition, August 3-7, in Orlando, Florida.

"Until now, there were few environmentally responsible options for treating and discharging turbid stormwater," said Michael Baker, President, Cascade EcoSolutions. ChitoVan is made from recycled seafood process waste. "It is a biodegradable polymer that removes suspended sediment, heavy metals, and organic contaminants from dirty water," he said.

The launch of ChitoVan and introduction of Cascade EcoSolutions is timely. Businesses, government and environmental groups are acutely aware of the need to manage storm water runoff in ways that support growing economies while preserving natural environments. Cascade EcoSolutions is well positioned to be the solution for the smallest to the largest storm water management jobs in North America. "Until

now, you could hire tanker trucks to haul it away, install an expensive permanent treatment system or discharge water of questionable quality and risk heavy fines – all options that could take a significant bite out of your profits," Baker noted.

ChitoVan products are completely safe for people and animals. When applied as directed in the treatment of contaminated water, there is no possibility that fish or other wildlife and habitat will be harmed.

"Chlorine, polyacrilamides, aluminum and iron salts have worked miracles in industrial applications, but they are too harsh when your discharge is direct to surface water," Baker said. "Our natural product quickly produces visible results – we often see reduction in water turbidity to less than 5 NTUs. That is sometimes clearer than what comes out your home water tap."

Baker also noted that some think chemical water treatment is prohibitively expensive. He said Cascade EcoSolutions is developing new application methods which reduce the amount of labor and equipment necessary to meet water quality standards.

## GROUND BREAKS ON CUTTING- EDGE DEMONSTRATION HOME

An innovative green technology demonstration project broke ground today at Bass Cove, just off of West Lake Sammamish Parkway in Bellevue, Washington. Shirey Contracting of Issaquah is building the Zero Energy Idea House to increase awareness of products and systems that can help inspire homeowners to move toward energy independence.

While the project's goal is to arrive at net zero energy usage, current projections estimate the home's annual energy cost at no more than \$500. The purpose of the project is to demonstrate how lifestyle changes, in addition to home modifications and technologies, can impact a home-owner's utility bill.

The project will be thoroughly documented during design and construction via a website ([www.zeroenergyideahouse.com](http://www.zeroenergyideahouse.com)), progression photography, educational presentations, media outreach, and public and building industry tours.

The home will consume significantly less energy due to the use of structural insulated panels (SIPs), which are a highly energy efficient and cost effective alternative to traditional stick framing and fiberglass insulation. The high level of insulation provided by SIPs means the amount of energy used to heat and cool the home will be cut by as much as 50%.

Photovoltaic (PV) solar panels will provide most of the home's power, while a 1,200 sq. ft. vegetated "green" roof, ENERGY STAR® lighting, windows,

and appliances, and in-floor radiant heating will make this residence extremely energy-efficient. The home will also be equipped with an energy monitor that displays energy input and output in real-time, a tool that will be key in helping homeowners modify their energy consumption habits.

The Zero Energy Idea House has been endorsed by Built Green® of King & Snohomish Counties and is receiving technical support from the U.S. Department of Energy's Building America program. Major sponsors include Ambiente European Tile Design, Clinkston Brunner Architects, ecohaus, Frog On A Log Parks, Insulspan, Klip BioTechnologies, Northwest Property Imaging, Trad Associates and Northwest ENERGY STAR® Homes. 425 Magazine is providing media support to the Zero Energy Idea House.

### About Shirey Contracting

Shirey Contracting specializes in custom residential homes and commercial facilities, remodels, and is a national leader in building with structural insulated panels (SIPs). The award winning company provides innovative design-build solutions for projects of all sizes, focusing on superior workmanship and sustainable building practices. Active within its industry and community, Shirey Contracting has been consistently recognized by its peers for remodeling excellence and their "build smart" philosophy.

## KIRKLAND BUSINESSES RECOGNIZED FOR RECYCLING

Nine out of the 50 King County businesses named as the "Best Workplaces for Recycling," are based in Kirkland, Washington, and eight of them are participating in the City's Green Business Program. The following Kirkland businesses were recognized by King County's "Recycle More. It's Easy." campaign as 2008 honorees:

Company		
Google, Inc	Chameleon Technologies	Champagne Design
ECO Cartridge Store	The Green Car Company	Poggemeyer Design Group
Allyis	OTA	PCC Natural Markets

In 2007, the City of Kirkland launched a program to recognize the efforts of existing "green" businesses and to encourage businesses to get "green." Qualified businesses will be listed on the Kirkland Green Business web page and receive a core program logo in the form of a window cling and electronic file that can be used for corporate printed materials. In addition to the "Kirkland Green Business" core logo, eligible businesses can obtain logos for seven categories: waste reduction/recycling, water conservation, transportation/commute trip reduction, pollution prevention, green building, energy efficiency and use of green power. To join the other 23 Kirkland Green Business participants, visit [www.clkirkland.wa.us/greenbusiness](http://www.clkirkland.wa.us/greenbusiness) or call 425-587-3812.

In 2007, King County launched the "Recycle More" campaign to increase recycling among single family residents, multi-family residents and businesses. The commercial recycling program targeted businesses that could demonstrate cost savings with an increased recycling program, especially with regard to paper, cardboard and organics.

To learn about King County's Recycle More program, go to [www.metrokc.gov/recyclemore](http://www.metrokc.gov/recyclemore) or call 206-296-4466.

# eastsidelife

Eastside Life is published each month and serves the communities of the Eastside

Material in this newspaper may always be reprinted without written approval of the Publisher

Post Office Box 50262  
Bellevue, WA 98015-0262  
(425) 458-5710 phone/fax  
[News@TheEastsideLife.com](mailto:News@TheEastsideLife.com)

Joe Kennedy - Publisher  
[Joe@TheEastsideLife.com](mailto:Joe@TheEastsideLife.com)  
Helen Recchi - Editor  
[Helen@TheEastsideLife.com](mailto:Helen@TheEastsideLife.com)  
Alexandra H. Anderson - Graphics & Layout  
[ahanderson@TheEastsideLife.com](mailto:ahanderson@TheEastsideLife.com)

[www.TheEastsideLife.com](http://www.TheEastsideLife.com)

Locally Owned and Independently Operated. ©2007 Good News, Uninc. All rights reserved.

Worthy Picks